



Kelvin Road School Newsletter

"Be the best you can be...
Kia toa, Kia Manawanui

29th May 2020
Term 2 Week 7

Phone: 09 298 8417 (Absences press 1) 021 089 17417 (Text absences) **Principal:** Heather Tanner **Email:** secretary@krs.ac.nz

**MARK YOUR
CALENDAR!**

Upcoming dates

Monday 1st June

Queen's birthday -
school closed

Friday 3rd July

Term 2 ends -
2.30pm

Monday 20th July

Term 3 starts -
8.30am

7th -11th September

School art
exhibition - school
hall

Friday 25th Sep

Term 3 ends -
2.30pm

Monday 12th Oct

Term 4 starts -
8.30am

Monday 9th Nov

Teacher Only Day -
School Closed

Wednesday 15th Dec

Term 4 ends

**Welcome, Haere Mai, Nau Mai, Malo e me'a mai, Afio mai, Kia Orana, Xin chao,
Magandang umaga, Fakaalofa atu ki a mutolu, Bula, Namaste**

Welcome to Term 2

Thank you for your support during the last few months, as together we united against the challenges of Covid-19.

Alert Levels 3 and 2 brought relief for many families and whānau, as it was once again safe for their children and young people to physically attend school.

Getting back to a normal routine is important for the health and wellbeing of your children, and being around their peers and teachers will help them feel in control and reassured. If your child is not already back we look forward to welcoming them back to school and making it a positive experience for them and for you.

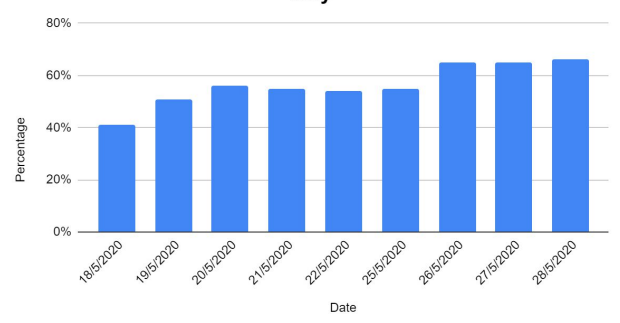
Regularly attending school really matters when it comes to your child's learning and their future. We are here to help and will be happy to talk about any challenges you have in ensuring your tamariki are back at school.

As you know, children under 16 are legally required to attend school every day, unless they are unwell. If they are unwell, please let us know so we can support you. Otherwise, we look forward to hearing from you to advise when they will recommence their learning at school.

We want to reassure whanau that;

- Our school is safe. Even though there is such a low risk of the virus getting in the school gates to start with, we will be keeping up our hygiene practices and other public health measures as an extra precaution for as long as we're at Alert Level 2
- The return to school has gone really smoothly and it has been brilliant to see how excited the children have been to get back to their learning and social routines
- It's really important children do return to school, not just for their education but also their health and wellbeing
- Instances of Covid-19 in New Zealand are very low and there have been low numbers or no new cases for weeks.
- We're aware of concerns out there that people without symptoms may be able to spread the virus. The Ministry of Health has advised us that there is no instance in New Zealand of someone spreading the virus without ever having symptoms.

**Kelvin Road School - School wide attendance 18th-28th
May**



**Queen's
Birthday**

**Monday 1st
June**

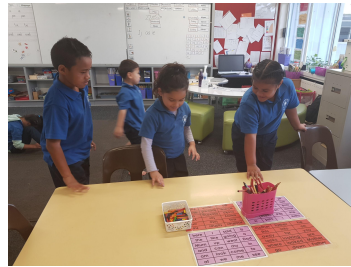
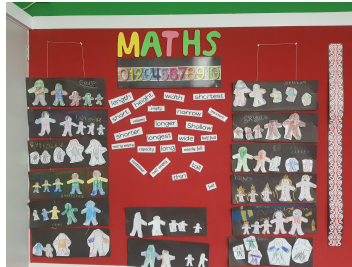
**School
closed**

Room 9

Building Mathematics Skills at School

Focus Area : Measurement non-standard unit

We learned about measurement without reading any scales. We focused on the concept of heavier, lighter, longer, shorter, etc. We used measuring tools such as hand spans, books, straws and cubes to measure the objects. We listened to the gingerbread man story. We cut the gingerbread family, coloured them and lined them up to see who was the shortest in the family. Then we arranged them from shortest to tallest, using a variety of words such as who is the tallest? Who is the shortest? Looking at our photos you can see how much fun we had.



Reminders

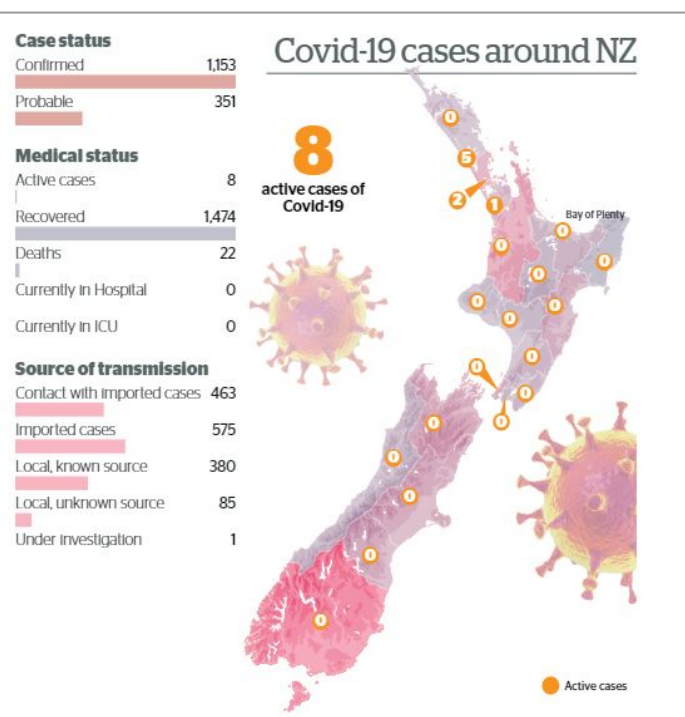
- Please remember that our winter uniform consists of the same blue polo shirt and school jersey, and if they wish to wear trackpants or leggings these MUST be navy blue. These can be purchased from places like; The Warehouse, Kmart and Postie. If a child is in a non uniform jumper/hoodie or jacket they will be asked to remove it.
- For health and safety reasons our water fountains are currently not in use. Please make sure to send your child to school with a named drink bottle.
- The school gates will be unlocked at 8.00 am, they will then be locked at 9.00 am to stop thoroughfare. If children are late they will need to enter through the Kelvin Road School gates.
- Parents can enter the school in Alert Level 2 however, on entering the school gates you will be asked to complete a register which will be taken by our staff members of all adults entering the premises. We will require your; name, the time, address, contact phone number and class intended to visit at entry.

New Entrant transitions

If you have a 4 year that is close to starting school they will need to have three class visits before they officially start school. These can be organised at the school office. Please call (09) 298 8417 and speak with the school secretary.

Kelvin Road School is currently seeking a part time Assistant Caretaker.

Required for up to 20 hours per week, with a focus on minor maintenance about the school. Excellent maintenance skills are required. A sound work ethic, with the flexibility to adjust to needs as they develop, is desirable. Hours of work to be negotiated. Applications to the Principal at principal@krs.ac.nz or deliver to the school office.



Caregiver contact details

If you have had a change of address or phone number you will need to contact the school office to update your details. This is very important in case an emergency occurs at school involving your child and we need to contact you. These details are only kept on file for this reason and are confidential.

If you would like to report an absence please call **092988417**
(press 1 for absences)



Or

Text **021 089 17417**



Queen's Birthday

Monday 1st June - School closed